

DURBIN INDUSTRIAL VALVE, Inc.



Durbin Swing Check Valves CV Series





Durbin Swing Check Valves CV Series

Features:

Maximum Pressure:
500 PSI (34 bar)

Maximum Temperature:
450° F (232° C)

Standard Port Sizes:
1/2" - 1 1/2" NPT

BSPT PORT SIZES ALSO AVAILABLE UPON REQUEST

Cv Ratings:

1/2" = 12

3/4" = 18

1" = 28

1-1/4" = 30

1-1/2" = 45

For:

Steam

Cold Water

Hot Water

Inert Gases



Another exclusive innovation from Durbin Industrial Valve, Inc. This particular line of swing (flapper) check is designed to eliminate the most commonly found problems associated with today's check valves.

BODY CONSTRUCTION

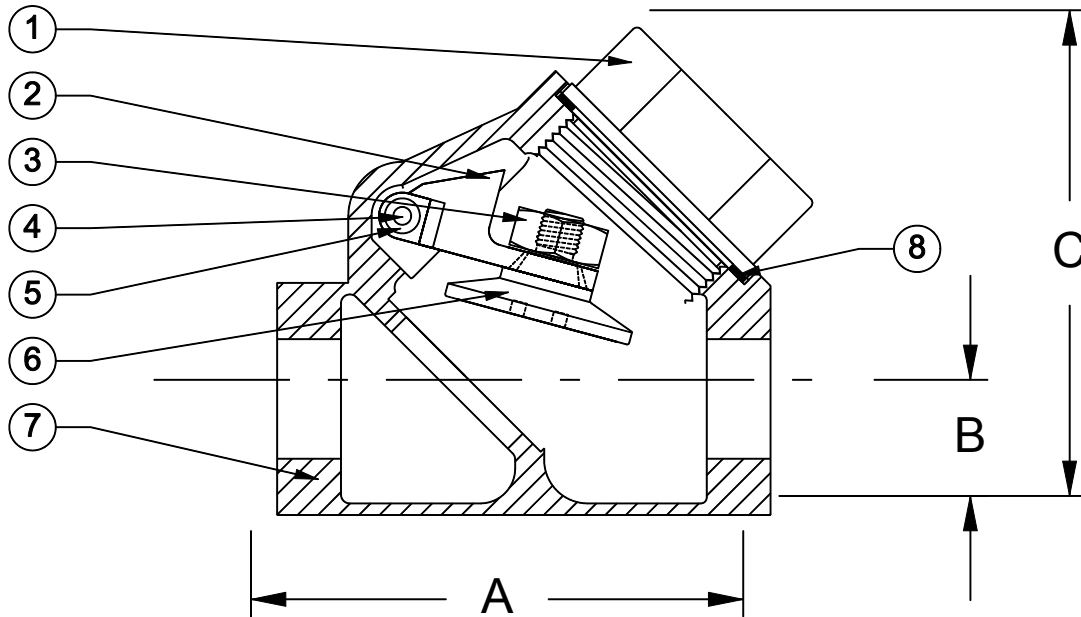
The body material selected for the Durbin CV™ is the same high quality cast bronze used in our line of Durbin steam valves.

Durbin also has installed a replaceable flapper seal on the swing arm to assure a better shut-off over time. If the seal is ever damaged in any way, simply replace the seal not the entire swing arm, a great budget saving factor.

The pin used to hold the swing arm is also constructed from 17-4 stainless steel, which is covered by a high-temperature thermoplastic bushing to avoid the swing arm and the pin from wearing against each other.



Parts List



| | DESCRIPTION | CV10 1/2" 12 Cv Max | CV20 3/4" 18Cv Max | CV30 1" 28Cv Max | CV40 1 1/4" 30 Cv Max | CV50 1 1/2" 45Cv Max |
|---|-------------|------------------------|-----------------------|---------------------|--------------------------|-------------------------|
| 1 | CAP | CV100 | CV100 | CV300 | CV300 | CV500 |
| 2 | SWING ARM | CV103 | CV103 | CV303 | CV303 | CV503 |
| 3 | JAM NUT | CV104 | CV104 | CV304 | CV304 | CV504 |
| 4 | PIN | CV102 | CV102 | CV302 | CV302 | CV502 |
| 5 | BUSHING | CV101 | CV101 | CV301 | CV301 | CV501 |
| 6 | SEAL DISK | CV105H | CV105H | CV305H | CV305H | CV505H |
| 7 | BODY | CV106 | CV206 | CV306 | CV406 | CV506 |
| 8 | GASKET | C383-070D | C383-070D | C383-074D | C383-074D | C383-029D |

Dimensions & Weight

| | | CV10 | CV20 | CV30 | CV40 | CV50 |
|--------|-----|--------|--------|--------|--------|--------|
| A | IN | 2 3/4" | 2 3/4" | 4 1/4" | 4 1/4" | 6" |
| | mm | 70 | 70 | 108 | 108 | 152 |
| B | IN | 3/4" | 3/4" | 1" | 1" | 1 1/4" |
| | mm | 19 | 19 | 25 | 25 | 32 |
| C | IN | 2 3/4" | 2 3/4" | 4 1/4" | 4 1/4" | 5" |
| | mm | 70 | 70 | 108 | 108 | 127 |
| WEIGHT | LBS | 4.0 | 4.0 | 5.0 | 5.0 | 11.0 |
| | kg. | 1.8 | 1.8 | 2.3 | 2.3 | 4.9 |