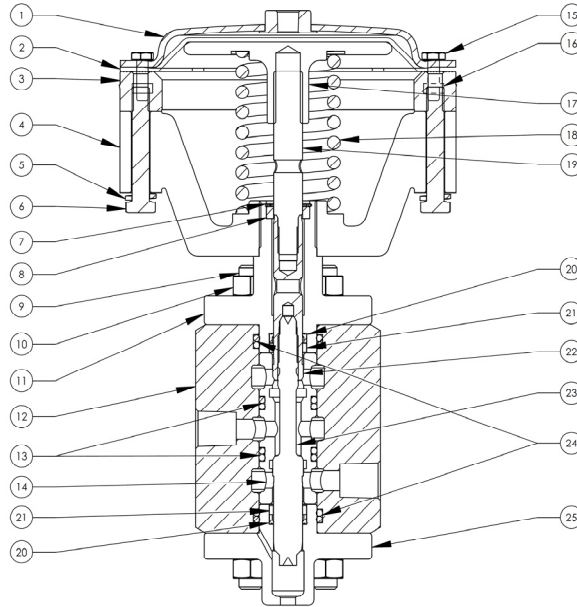
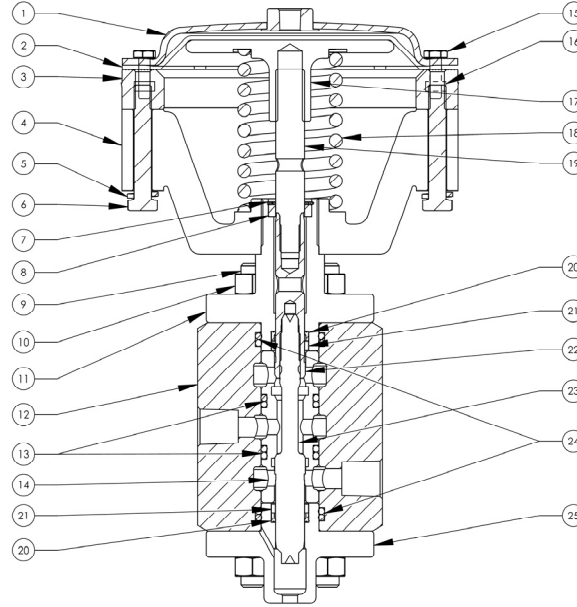


DURBIN HYDRAULIC 4000# PARTS LIST



4000 Lb. HYDRAULIC VALVE							
VALVE NUMBER	D4820	D4821	D4830	D4831	D4621	D4631	
SIZE	1/2" 2-WAY N/O	1/2" 2-WAY N/C	3/4" 2-WAY N/O	3/4" 2-WAY N/C	1/2" 3-WAY N/C	3/4" 3-WAY N/C	
Cv RATING	Cv 3.3	Cv 3.4	Cv 3.55	Cv 3.56	Cv 3.3	Cv 3.6	
ITEM	DESCRIPTION	PART #	PART #	PART #	PART #	PART #	
1	LID	C293-023DG	C293-023DG	C293-023DG	C293-023DG	C293-023DG	
2*	DIAPHRAGM	C333-017D	C333-017D	C333-017D	C333-017D	C333-017D	
3	RING	C893-015D-SS	C893-015D-SS	C893-015D-SS	C893-015D-SS	C893-015D-SS	
4	YOKE	D283-025D-SS	D283-025D-SS	D283-025D-SS	D283-025D-SS	D283-025D-SS	
5	LOCK WASHER	H175-21	H175-21	H175-21	H175-21	H175-21	
6	HEX BOLT	H096-55	H096-55	H096-55	H096-55	H096-55	
7	RETAINING RING	H090-19	H090-19	H090-19	H090-19	H090-19	
8	BUSHING	C343-000D	C343-000D	C343-000D	C343-000D	C343-000D	
9	STUD	D153-024D	D153-024D	D153-024D	D153-024D	D153-024D	
10	HEX NUT	H060-23	H060-23	H060-23	H060-23	H060-23	
11	CAP	D283-200D	D283-200D	D283-200D	D283-200D	D283-200D	
12	BODY	C093-095D	C093-095D	C093-043D	C093-043D	C093-044D	
13*	ORING	H135-51	H135-51	H135-51	H135-51	H135-51	
14	SEAT SLEEVE	D013-001D	D013-001D	D013-001D	D013-001D	D013-001D	
15	HEX BOLT	H096-10	H096-10	H096-10	H096-10	H096-10	
16	HEX NUT	H060-03	H060-03	H060-03	H060-03	H060-03	
17	PISTON	C783-043D-IC	C783-043D-IC	C783-043D-IC	C783-043D-IC	C783-043D-IC	
18	SPRING	D293-081DR	D293-081DR	D293-081DR	D293-081DR	D293-081DR	
19	STEM EXTENSION	C332-012DD	C332-012DD	C332-012DD	C332-012DD	C332-012DD	
20*	PACKER	C683-040D	C683-040D	C683-040D	C683-040D	C683-040D	
21	SPACER	D043-065D	D043-065D	D043-065D	D043-065D	D043-065D	
22	UPPER STEM	C332-012BD	C332-012BD	C332-012BD	C332-012BD	C332-012BD	
23	LOWER STEM	C332-012AD	C332-012AD	C332-012AD	C332-012AD	C332-012AD	
24*	ORING	H136-24	H136-24	H136-24	H136-24	H136-24	
25	BOTTOM CAP	C213-050D	C213-050D	C213-050D	C213-050D	C213-050D	

DURBIN HYDRAULIC 6000# PARTS LIST



6000 Lb. HYDRAULIC VALVE							
VALVE NUMBER	D6820	D6821	D6830	D6831	D6621	D6631	
SIZE	1/2" 2-WAY N/O	1/2" 2-WAY N/C	3/4" 2-WAY N/O	3/4" 2-WAY N/C	1/2" 3-WAY N/C	3/4" 3-WAY N/C	
Cv RATING	Cv 2.65	Cv 2.65	Cv 2.7	Cv 2.7	Cv 2.8	Cv 2.8	
ITEM	DESCRIPTION	PART #	PART #	PART #	PART #	PART #	
1	LID	C293-023DG	C293-023DG	C293-023DG	C293-023DG	C293-023DG	
2*	DIAPHRAGM	C333-017D	C333-017D	C333-017D	C333-017D	C333-017D	
3	RING		C893-015D-SS	C893-015D-SS	C893-015D-SS	C893-015D-SS	
4	YOKE	D283-025D-SS	D283-025D-SS	D283-025D-SS	D283-025D-SS	D283-025D-SS	
5	LOCK WASHER	H175-21	H175-21	H175-21	H175-21	H175-21	
6	HEX BOLT	H096-55	H096-55	H096-55	H096-55	H096-55	
7	RETAINING RING	H090-19	H090-19	H090-19	H090-19	H090-19	
8	BUSHING	C343-000D	C343-000D	C343-000D	C343-000D	C343-000D	
9	STUD	D153-024D	D153-024D	D153-024D	D153-024D	D153-024D	
10	HEX NUT	H060-23	H060-23	H060-23	H060-23	H060-23	
11	CAP	D283-200D	D283-200D	D283-200D	D283-200D	D283-200D	
12	BODY	C093-030D	C093-030D	C093-045D	C093-045D	C093-046D	
13*	ORING	H135-51	H135-51	H135-51	H135-51	H135-51	
14	SEAT SLEEVE	D013-001D	D013-001D	D013-001D	D013-001D	D013-001D	
15	HEX BOLT	H096-10	H096-10	H096-10	H096-10	H096-10	
16	HEX NUT	H060-03	H060-03	H060-03	H060-03	H060-03	
17	PISTON	C783-043D-IC	C783-043D-IC	C783-043D-IC	C783-043D-IC	C783-043D-IC	
18	SPRING	D293-081DR	D293-081DR	D293-081DR	D293-081DR	D293-081DR	
19	STEM EXTENSION	C332-012DD	C332-012DD	C332-012DD	C332-012DD	C332-012DD	
20*	PACKER	C683-040D	C683-040D	C683-040D	C683-040D	C683-040D	
21	SPACER	D043-065D	D043-065D	D043-065D	D043-065D	D043-065D	
22	UPPER STEM	C332-012BD	C332-012BD	C332-012BD	C332-012BD	C332-012BD	
23	LOWER STEM	C332-012AD	C332-012AD	C332-012AD	C332-012AD	C332-012AD	
24*	ORING 218	H136-24	H136-24	H136-24	H136-24	H136-24	
25	BOTTOM CAP	C213-050D	C213-050D	C213-050D	C213-050D	C213-050D	