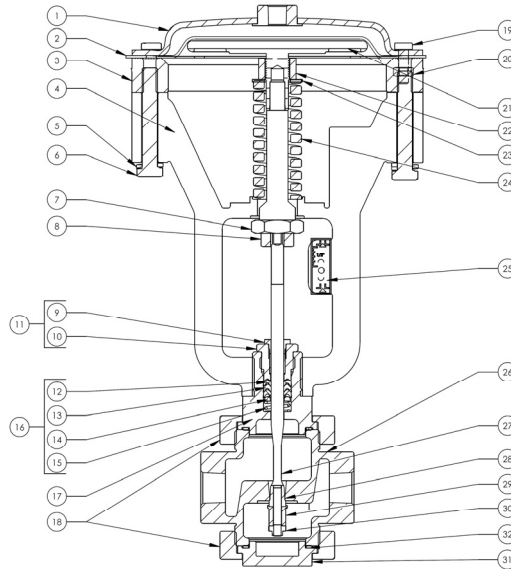


LOW FLOW CONTROL VALVES

DURBIN INDUSTRIAL VALVE

LOW FLOW PARTS LIST 3-15 PSI



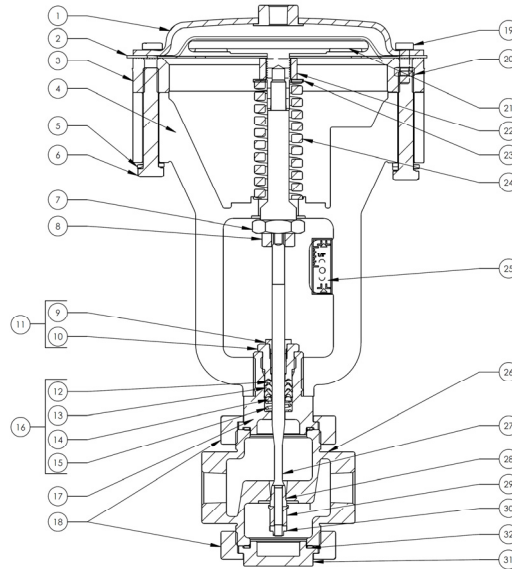
	VALVE NUMBER	D352-21061	D352-23061	D352-32061	D352-22061	D352-24061	D352-33061
	SIZE	1/2"	1/2"	1/2"	3/4"	3/4"	3/4"
	PILOT PRESSURE	3-15 PSI	3-15 PSI	3-15 PSI	3-15 PSI	3-15 PSI	3-15 PSI
	Cv RATING	2.0 Cv MAX	2.5 Cv MAX	3.0 Cv MAX	2.0 Cv MAX	2.5 Cv MAX	3.0 Cv MAX
ITEM	DESCRIPTION	PART #	PART #	PART #	PART #	PART #	PART #
1	LID	C293-023DBLUE	C293-023DBLUE	C293-023DBLUE	C293-023DBLUE	C293-023DBLUE	C293-023DBLUE
2*	DIAPHRAGM	C333-073D	C333-073D	C333-073D	C333-073D	C333-073D	C333-073D
3	RING	C893-015D-SS	C893-015D-SS	C893-015D-SS	C893-015D-SS	C893-015D-SS	C893-015D-SS
4	YOKE	D283-021D-SS	D283-021D-SS	D283-021D-SS	D283-021D-SS	D283-021D-SS	D283-021D-SS
5	LOCK WASHER	H175-21	H175-21	H175-21	H175-21	H175-21	H175-21
6	HEX BOLT 3/8	H096-55	H096-55	H096-55	H096-55	H096-55	H096-55
7	UPPER STEM	D143-031D	D143-031D	D143-031D	D143-031D	D143-031D	D143-031D
8	SWIVEL NUT	C913-012D	C913-012D	C913-012D	C913-012D	C913-012D	C913-012D
9	PACKING NUT BUSHING	VP524	VP524	VP524	VP524	VP524	VP524
10	PACKING NUT	C853-092D	C853-092D	C853-092D	C853-092D	C853-092D	C853-092D
11	PACKING NUT ASSY	C853-090D	C853-090D	C853-090D	C853-090D	C853-090D	C853-090D
12*	BLACK PACKER	C683-070D	C683-070D	C683-070D	C683-070D	C683-070D	C683-070D
13*	WHITE PACKER	C683-069D	C683-069D	C683-069D	C683-069D	C683-069D	C683-069D
14	PACKER SPREADER	C713-012D	C713-012D	C713-012D	C713-012D	C713-012D	C713-012D
15	PACKING SPRING	D293-104Y	D293-104Y	D293-104Y	D293-104Y	D293-104Y	D293-104Y
16	PACKING KIT	C242-015D	C242-015D	C242-015D	C242-015D	C242-015D	C242-015D
17	PACKING GLAND	C113-058D	C113-058D	C113-058D	C113-058D	C113-058D	C113-058D
18	UNION NUT	C663-022D-SS	C663-022D-SS	C663-022D-SS	C663-022D-SS	C663-022D-SS	C663-022D-SS
19	HEX BOLT 1/4	H096-10	H096-10	H096-10	H096-10	H096-10	H096-10
20	HEX NUT 1/4	H060-03	H060-03	H060-03	H060-03	H060-03	H060-03
21	PISTON	C783-045D-IC	C783-045D-IC	C783-045D-IC	C783-045D-IC	C783-045D-IC	C783-045D-IC
22	ADJUSTING NUT	H060-26	H060-26	H060-26	H060-26	H060-26	H060-26
23	SPRING WASHER	C133-006D	C133-006D	C133-006D	C133-006D	C133-006D	C133-006D
24	SPRING	D293-079S	D293-079S	D293-079S	D293-079S	D293-079S	D293-079S
25	N/C TRAVEL TAG	C009D	C009D	C009D	C009D	C009D	C009D
26	BODY	LF400-SS	LF400-SS	LF400-SS	LF401-SS	LF401-SS	LF401-SS
27	STEM	D093-038D	D093-038D	D093-039D	D093-038D	D093-038D	D093-039D
28*	SEAL	C343-08LF CAST	C343-09LF CAST	C343-07LF CAST	C343-08LF CAST	C343-09LF CAST	C343-07LF CAST
29	STEM WASHER	C913-015D 17-4SS	C913-015D 17-4SS	C913-015D 17-4SS	C913-015D 17-4SS	C913-015D 17-4SS	C913-015D 17-4SS
30	STEM NUT	C913-013D	C913-013D	C913-013D	C913-013D	C913-013D	C913-013D
31	BOTTOM CAP 1/2	C213-016D-SS	C213-016D-SS	C213-016D-SS	C213-016D-SS	C213-016D-SS	C213-016D-SS
32*	BODY GASKET	C383-080D	C383-080D	C383-080D	C383-080D	C383-080D	C383-080D
	SERVICE KIT	D21061-S	D23061-S	D32061-S	D22061-S	D24061-S	D33061-S

Please contact us for more information at Phone: 330.724.9968 Email: valve@durbinvalve.com Website: www.durbinvalve.com

LOW FLOW CONTROL VALVES

DURBIN INDUSTRIAL VALVE

LOW FLOW PARTS LIST 6-30 PSI



	VALVE NUMBER	D352-34061	D352-34161	D352-34261	D352-35061	D352-35161	D352-35261
	SIZE	1/2"	1/2"	1/2"	3/4"	3/4"	3/4"
	PILOT PRESSURE	6-30 PSI	6-30 PSI	6-30 PSI	6-30 PSI	6-30 PSI	6-30 PSI
	Cv RATING	2.0 Cv MAX	2.5 Cv MAX	3.0 Cv MAX	2.0 Cv MAX	2.5 Cv MAX	3.0 Cv MAX
ITEM	DESCRIPTION	PART #	PART #	PART #	PART #	PART #	PART #
1	LID	C293-023DBLUE	C293-023DBLUE	C293-023DBLUE	C293-023DBLUE	C293-023DBLUE	C293-023DBLUE
2*	DIAPHRAGM	C333-073D	C333-073D	C333-073D	C333-073D	C333-073D	C333-073D
3	RING	C893-015D-SS	C893-015D-SS	C893-015D-SS	C893-015D-SS	C893-015D-SS	C893-015D-SS
4	YOKE	D283-021D-SS	D283-021D-SS	D283-021D-SS	D283-021D-SS	D283-021D-SS	D283-021D-SS
5	LOCK WASHER	H175-21	H175-21	H175-21	H175-21	H175-21	H175-21
6	HEX BOLT 3/8	H096-55	H096-55	H096-55	H096-55	H096-55	H096-55
7	UPPER STEM	D134-031D	D134-031D	D134-031D	D143-031D	D143-031D	D143-031D
8	SWIVEL NUT	C913-012D	C913-012D	C913-012D	C913-012D	C913-012D	C913-012D
9	PACKING NUT BUSHING	VP524	VP524	VP524	VP524	VP524	VP524
10	PACKING NUT	C853-092D	C853-092D	C853-092D	C853-092D	C853-092D	C853-092D
11	PACK NUT ASSY	C853-090D	C853-090D	C853-090D	C853-090D	C853-090D	C853-090D
12*	BLACK PACKER	C683-070D	C683-070D	C683-070D	C683-070D	C683-070D	C683-070D
13*	WHITE PACKER	C683-069D	C683-069D	C683-069D	C683-069D	C683-069D	C683-069D
14	PACKER SPREADER	C713-012D	C713-012D	C713-012D	C713-012D	C713-012D	C713-012D
15	PACKING SPRING	D293-104Y	D293-104Y	D293-104Y	D293-104Y	D293-104Y	D293-104Y
16	PACKING KIT	C242-015D	C242-015D	C242-015D	C242-015D	C242-015D	C242-015D
17	PACKING GLAND	C113-058D	C113-058D	C113-058D	C113-058D	C113-058D	C113-058D
18	UNION NUT	C663-022D-SS	C663-022D-SS	C663-022D-SS	C663-022D-SS	C663-022D-SS	C663-022D-SS
19	HEX BOLT 1/4	H096-10	H096-10	H096-10	H096-10	H096-10	H096-10
20	HEX NUT 1/4	H060-03	H060-03	H060-03	H060-03	H060-03	H060-03
21	PISTON	C783-045D-IC	C783-045D-IC	C783-045D-IC	C783-045D-IC	C783-045D-IC	C783-045D-IC
22	HEX NUT 5/8	H060-26	H060-26	H060-26	H060-26	H060-26	H060-26
23	SPRING WASHER	C133-006D	C133-006D	C133-006D	C133-006D	C133-006D	C133-006D
24	SPRING	D293-078S	D293-078S	D293-078S	D293-078S	D293-079S	D293-079S
25	N/C TRAVEL TAG	C009D	C009D	C009D	C009D	C009D	C009D
26	BODY	LF400-SS	LF400-SS	LF400-SS	LF401-SS	LF401-SS	LF401-SS
27	STEM	D093-038D	D093-038D	D093-039D	D093-038D	D093-038D	D093-039D
28*	SEAL	C343-08LF CAST	C343-09LF CAST	C343-07LF CAST	C343-08LF CAST	C343-09LF CAST	C343-07LF CAST
29	STEM WASHER	C913-015D 17-4SS	C913-015D 17-4SS	C913-015D 17-4SS	C913-015D 17-4SS	C913-015D 17-4SS	C913-015D 17-4SS
30	STEM NUT	C913-013D	C913-013D	C913-013D	C913-013D	C913-013D	C913-013D
31	BOTTOM CAP	C213-016D-SS	C213-016D-SS	C213-016D-SS	C213-016D-SS	C213-016D-SS	C213-016D-SS
32*	BODY GASKET	C383-080D	C383-080D	C383-080D	C383-080D	C383-080D	C383-080D
	SERVICE KIT	D34061-S	D34161-S	D34261-S	D35061-S	D35161-S	D35261-S

Please contact us for more information at Phone: 330.724.9968 Email: valve@durbinvalve.com Website: www.durbinvalve.com