

# DURBIN PISTON TOP VALVES

DURBIN INDUSTRIAL VALVE

## PSI MANIFOLD STYLE PIPING



**Overview:** The Durbin Piston Top Series (PSI) provides the rugged durability of traditional process-control valves with the added benefits of modern technology and upgraded materials. This version of the PSI family is designed to work within your existing manifold system as a direct, drop-in replacement.

**Materials of Construction:** The Durbin PSI series is constructed of stainless steel to protect against the damaging effects of corrosion. All wetted components are constructed from corrosion resistant materials (CRAs) or are engineered plastic materials. Multiple engineered plastic materials are used throughout the dynamic components as guide bushings to protect against the galling and wear typically found in this type of valve.

**Application:** This valve series can be used as a supply valve, a drain valve, a redundant valve, or anywhere simple on/off functionality is required. This series requires less pilot air than traditional diaphragm style valves while delivering consistent and reliable performance. Whether it is high-temperature steam, low-temperature cooling water, or simply a vent application, the Durbin PSI series can handle every application with the reliability, durability and repeatability that customers demand.

### **Features:**

**Valve Type:** [Globe](#)

**Function:** 2-way/3-Way

**Action:** Normally Closed/Normally Open

**Actuation:** Pneumatic

**Pilot Range:** 40-100 psi (2.8-6.9 bar)

**Sizes:** ½"-1½"(DN 15 to DN 40)

**Pressure Ratings:** Up to 500 psi (34 bar)

**Temperature Ratings:** -40°F to 450°F (-40°C to 231°C)

**Connection Style:** Threaded (NPT/BSPT)

**Seat Type:** Soft Seat

**Leakage Rate:** ANSI/FCI 70-2 class VI

**Cv:** Maximum of 29.7

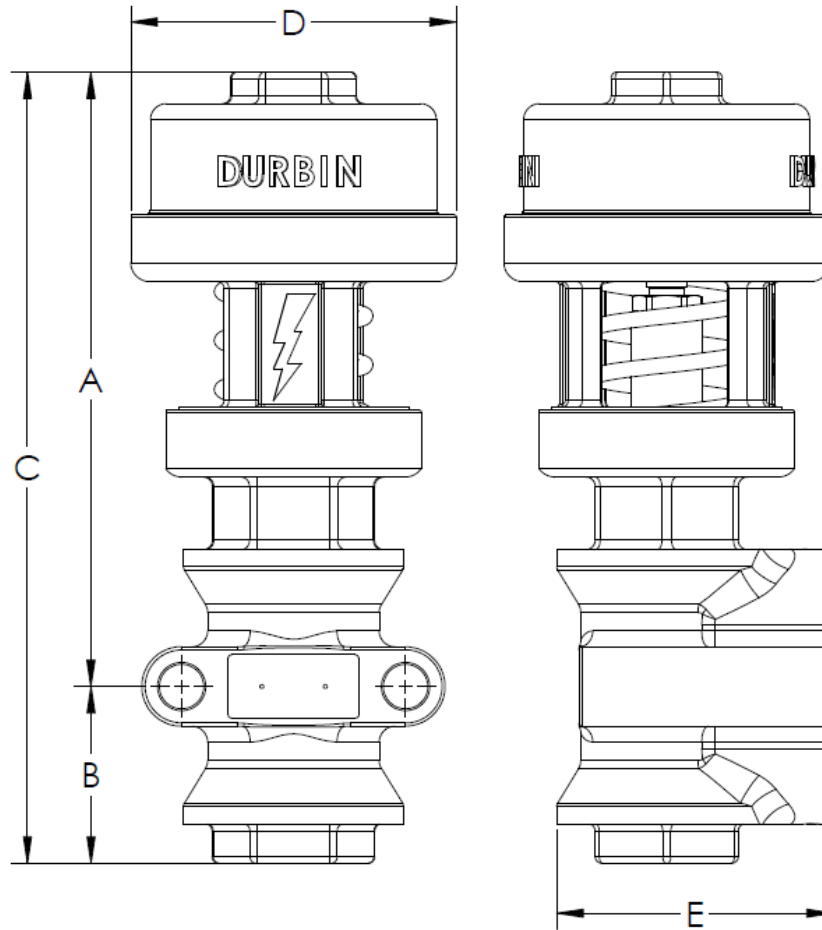
**Media:** Most process fluid types; gas, liquids and steam



# DURBIN PISTON TOP VALVES

DURBIN INDUSTRIAL VALVE

## PSI MANIFOLD STYLE DIMENSIONS



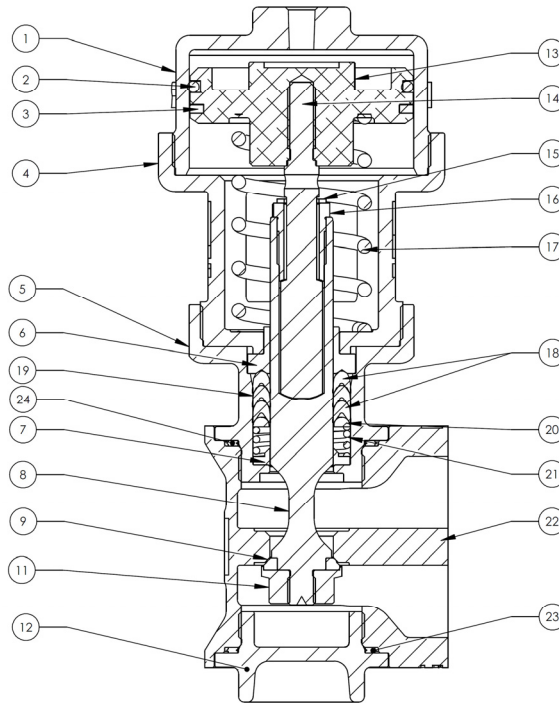
PSI 2W NPT MANIFOLD STYLE DIMENSIONS				
ITEM		1/2"	3/4"	1"
A	IN	6.70	8.36	9.67
	mm	170.0	212.0	246.0
B	IN	1.63	2.60	2.78
	mm	41.0	66.0	71.0
C	IN	8.14	10.96	12.40
	mm	207.0	278.0	315.0
D	IN	3.36	3.89	5.25
	mm	85.0	97.0	133.0
E	IN	2.72	3.29	4.35
	mm	69.0	84.0	111.0



# DURBIN PISTON TOP VALVES

DURBIN INDUSTRIAL VALVE

## PSI MANIFOLD STYLE 2WNC PARTS LIST

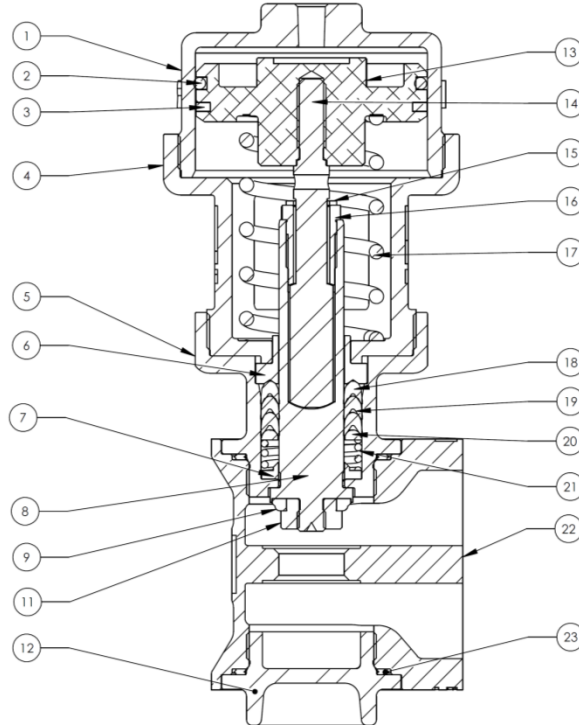


	VALVE NUMBER	PSI-213M	PSI-214M	PSI-215M
	SIZE	1/2"	3/4"	1"
ITEM	DESCRIPTION	2WNC	2WNC	2WNC
1	LID	DCT-103	DCT-203	DCT-303
2	ORING	DCT-130-ORING	DCT-230-ORING	DCT-330-ORING
3	PISTON GUIDE RING	PSI-232	PSI-332	PSI-332
4	YOKE	PSI-209-SS	PSI-309-SS	PSI-509-SS
5	PACKING GLAND	DCT-105	DCT-205	DCT-305
6	YOKE BUSHING	PSI-210	PSI-310	PSI-510
7	GLAND BUSHING	PSI-231	PSI-331	PSI-531
8	STEM	DCT-120	DCT-220	D093-212D
9	STEM SEAL	DCT-127	C343-12VP	C343-35D
10	STEM WASHER	N/A	N/A	N/A
11	STEM NUT	DCT-124	C553-019D	C553-023D
12	BOTTOM CAP	PSI-200-SS	PSI-300-SS	DCT-300
13	PISTON	PSI-204	PSI-304	PSI-504
14	SWIVEL STEM	D143-030D	D093-037D	PSI-546
15	DUST WASHER	N/A	H132-04	H132-05
16	SWIVEL NUT	C913-011D	C643-002D	C643-006D
17	SPRING	PSI-234	PSI-334	PSI-534
18	BLACK PACKER	H220-21	H220-20	H220-13
19	WHITE PACKER	C683-076D	C683-050D	C683-018D
20	SPREADER	C713-017D	C713-003D	C713-004D
21	PACKING SPRING	D293-131Y	D293-001Y	D293-002Y
22	BODY	DCT-101M	DCT-201M	DCT-301M
23	GASKET	C383-064D	C383-022D	C383-028D

# DURBIN PISTON TOP VALVES

DURBIN INDUSTRIAL VALVE

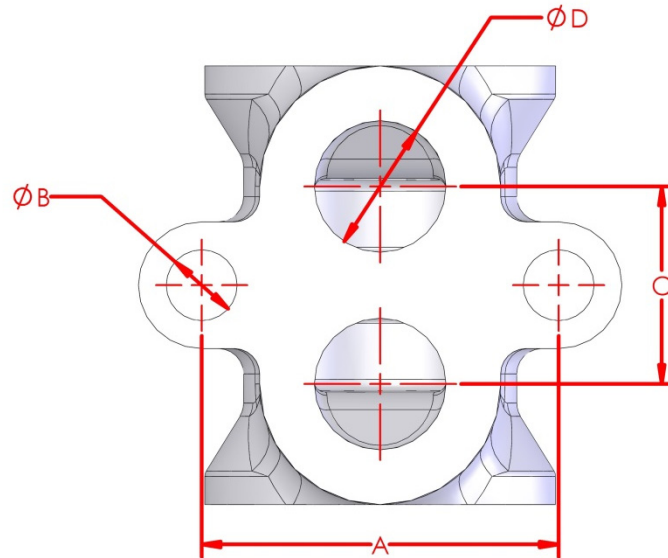
## PSI MANIFOLD STYLE 2WNO PARTS LIST



	VALVE NUMBER	PSI-223M	PSI-224M	PSI-225M
	SIZE	1/2"	3/4"	1"
ITEM	DESCRIPTION	2WNO	2WNO	2WNO
1	LID	DCT-103	DCT-203	DCT-303
2	ORING	DCT-130-ORING	DCT-230-ORING	DCT-330-ORING
3	PISTON GUIDE RING	PSI-232	PSI-332	PSI-332
4	YOKE	PSI-209-SS	PSI-309-SS	PSI-509-SS
5	PACKING GLAND	DCT-105	DCT-205	DCT-305
6	YOKE BUSHING	PSI-210	PSI-310	PSI-510
7	GLAND BUSHING	PSI-231	PSI-331	PSI-531
8	STEM	DCT-121	DCT-221	D093-213D
9	STEM SEAL	DCT-127	C343-12VP	C343-35D
10	STEM WASHER	N/A	N/A	N/A
11	STEM NUT	DCT-126	C553-017D	C553-024D
12	BOTTOM CAP	PSI-200-SS	PSI-300-SS	DCT-300
13	PISTON	PSI-204	PSI-304	PSI-504
14	SWIVEL STEM	D143-030D	D093-037D	PSI-546
15	DUST WASHER	N/A	H132-04	H132-05
16	SWIVEL NUT	C913-011D	C643-002D	C643-006D
17	SPRING	PSI-134-40	PSI-334-40	PSI-534
18	BLACK PACKER	H220-21	H220-20	H220-13
19	WHITE PACKER	C683-076D	C683-050D	C683-018D
20	SPREADER	C713-017D	C713-003D	C713-004D
21	PACKING SPRING	D293-131Y	D293-001Y	D293-002Y
22	BODY	DCT-101M	DCT-201M	DCT-301M
23	GASKET	C383-064D	C383-022D	C383-028D

# DURBIN PISTON TOP VALVES

DURBIN INDUSTRIAL VALVE



## 1/2"-1" PSI MANIFOLD VALVE SIZING CHART

NOMINAL VALVE SIZE	STYLE	DESCRIPTION	PSI		CV		DIMENSIONS				
			PSI	BAR	PORT 1 TO PORT 2	PORT 2 TO PORT 1	A	ØB	C	ØD	
1/2"	2WNC	1/2"	MODEL	PSI-213M		5.8	6	2.27" 57.5 mm	0.51" 13.0 mm	0.98" 25.0 mm	0.48" 12.1 mm
			PRESSURE RATING	500	34						
	2WNO	1/2"	MODEL	PSI-223M		6.4	6.6				
			PRESSURE RATING	500	34						
3/4"	2WNC	3/4"	MODEL	PSI-214M		9.1	9.4	2.50" 63.5 mm	0.51" 13.0 mm	1.56" 39.7 mm	0.79" 20.0 mm
			PRESSURE RATING	500	34						
	2WNO	3/4"	MODEL	PSI-224M		10.0	10.3				
			PRESSURE RATING	500	34						
1"	2WNC	1"	MODEL	PSI-215M		23.3	23.5	3.53" 89.5 mm	0.70" 17.8 mm	1.95" 49.5 mm	1.30" 33.0 mm
			PRESSURE RATING	500	34						
	2WNO	1"	MODEL	PSI-225M		25.6	25.9				
			PRESSURE RATING	500	34						

## ORDERING INFORMATION

Example: PSI-214N= 2-Way, Normally Closed, 3/4", 500 psi Valve with NPT threaded ports

