

Durbin Industrial Valve
4000# & 6000# Hydraulic Series



DURBIN HYDRAULIC VALVES

DURBIN INDUSTRIAL VALVE



Features:

Valve Type: Spool

Function: 2-way/3-way

Action: Normally Closed/Normally Open

Actuation: Pneumatic

Pilot Range: 35-40 psi (2.4-2.8 bar)

Sizes: ½"-¾" (DN 15 to DN 20)

Pressure Ratings: Up to 6000 psi (414 bar)

Temperature Ratings: -20°F to 160°F (-26°C to 71°C)

Connection Style: Threaded (NPT/BSPT)

Seat Type: Hard Seat

Leakage Rate: ANSI/FCI 70-2 class VI

Cv: Maximum of 3.6

Media: Most process fluid types; gas, liquids and steam

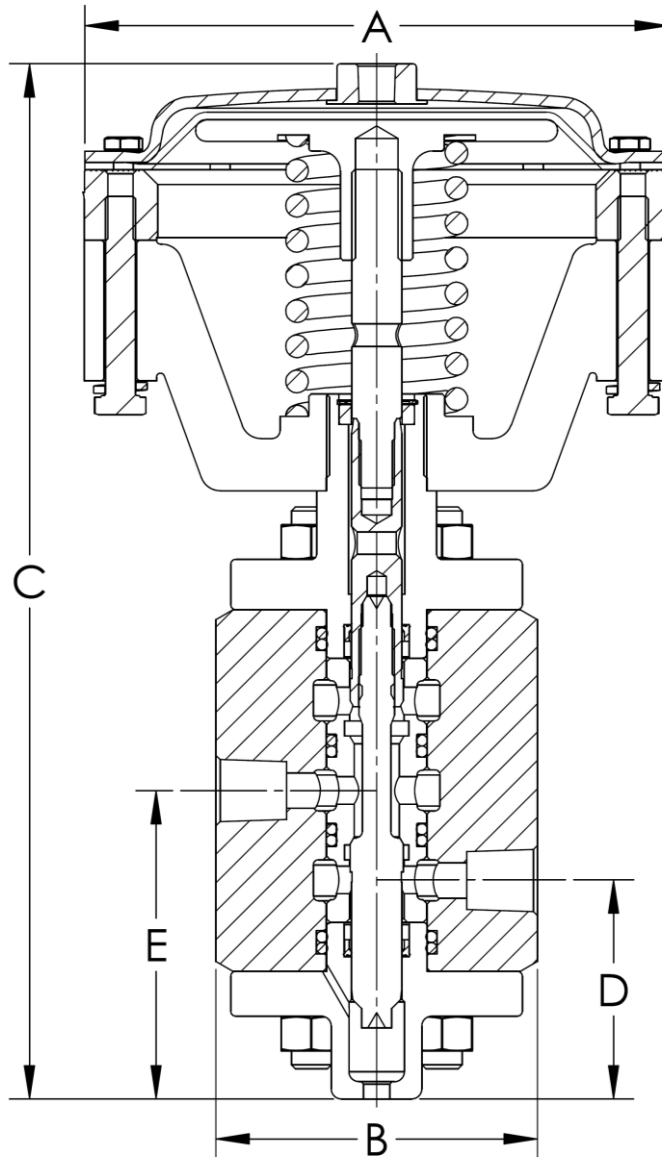
Overview: The Durbin Hydraulic Valve Series is available for your high-pressure, low-volume needs. The stainless steel billet design provides the strength and toughness to withstand the stress associated with these high-pressure applications. The D4000 line can deliver performance up to 4000 psi, while the D6000 series can deliver up to 6000 psi media pressures.

Materials of Construction: The Durbin HV series is constructed of ASME pressure vessel stainless steel grade 300 series. The seat sleeve and stem components are machined from precipitation-hardenable material, giving this valve exceptional sealing ability over the life of the product. This tough and durable material can withstand the devastating effects caused by high velocity media flow through the flow channels.

Application: This valve series is ideal for applications where high pressure and low volume flow is required. The hard-seated design allows for repeated sealability at these elevated pressures. Whether you are needing that high pressure bump at the end of a cylinder movement, or you just have a high pressure application that traditional globe valves can't achieve, the Durbin HV series can provide a solution to your needs.



DURBIN HYDRAULIC VALVE DIMENSIONS



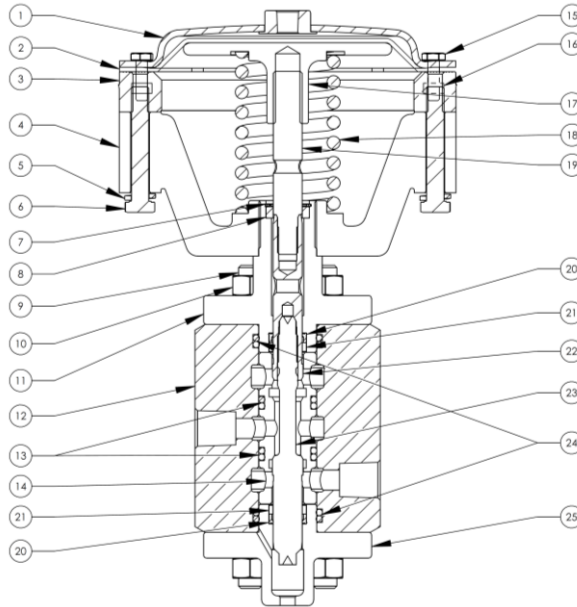
DURBIN HYDRAULIC VALVE DIMENSIONS						
VALVE SIZE	UNITS	A	B	C	D	E
1/2"-3/4"	IN	7.26	4.00	12.89	2.73	3.84
	mm	184.0	102.0	327.0	69.0	98.0



DURBIN HYDRAULIC VALVES

DURBIN INDUSTRIAL VALVE

DURBIN HYDRAULIC 4000# PARTS LIST



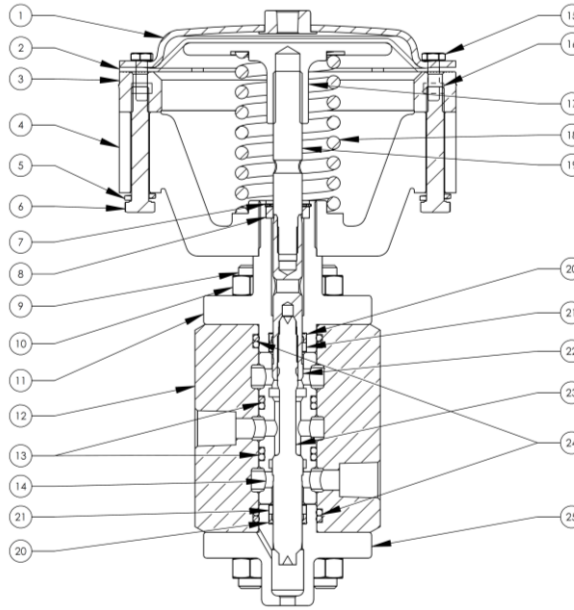
4000 Lb. HYDRAULIC VALVE							
VALVE NUMBER	D4820	D4821	D4830	D4831	D4621	D4631	
SIZE	1/2" 2-WAY N/O	1/2" 2-WAY N/C	3/4" 2-WAY N/O	3/4" 2-WAY N/C	1/2" 3-WAY N/C	3/4" 3-WAY N/C	
Cv RATING	Cv 3.3	Cv 3.4	Cv 3.55	Cv 3.56	Cv 3.3	Cv 3.6	
ITEM	DESCRIPTION	PART #	PART #	PART #	PART #	PART #	
1	LID	C293-023DG	C293-023DG	C293-023DG	C293-023DG	C293-023DG	
2*	DIAPHRAGM	C333-017D	C333-017D	C333-017D	C333-017D	C333-017D	
3	RING	C893-015D-SS	C893-015D-SS	C893-015D-SS	C893-015D-SS	C893-015D-SS	
4	YOKE	D283-025D-SS	D283-025D-SS	D283-025D-SS	D283-025D-SS	D283-025D-SS	
5	LOCK WASHER	H175-21	H175-21	H175-21	H175-21	H175-21	
6	HEX BOLT	H096-55	H096-55	H096-55	H096-55	H096-55	
7	RETAINING RING	H090-19	H090-19	H090-19	H090-19	H090-19	
8	BUSHING	C343-000D	C343-000D	C343-000D	C343-000D	C343-000D	
9	STUD	D153-024D	D153-024D	D153-024D	D153-024D	D153-024D	
10	HEX NUT	H060-23	H060-23	H060-23	H060-23	H060-23	
11	CAP	D283-200D	D283-200D	D283-200D	D283-200D	D283-200D	
12	BODY	C093-095D	C093-095D	C093-043D	C093-043D	C093-028D	
13*	ORING	H135-51	H135-51	H135-51	H135-51	H135-51	
14	SEAT SLEEVE	D013-001D	D013-001D	D013-001D	D013-001D	D013-001D	
15	HEX BOLT	H096-10	H096-10	H096-10	H096-10	H096-10	
16	HEX NUT	H060-03	H060-03	H060-03	H060-03	H060-03	
17	PISTON	C783-043D-IC	C783-043D-IC	C783-043D-IC	C783-043D-IC	C783-043D-IC	
18	SPRING	D293-081DR	D293-081DR	D293-081DR	D293-081DR	D293-081DR	
19	STEM EXTENSION	C332-012DD	C332-012DD	C332-012DD	C332-012DD	C332-012DD	
20*	PACKER	C683-040D	C683-040D	C683-040D	C683-040D	C683-040D	
21	SPACER	D043-065D	D043-065D	D043-065D	D043-065D	D043-065D	
22	UPPER STEM	C332-012BD	C332-012BD	C332-012BD	C332-012BD	C332-012BD	
23	LOWER STEM	C332-012AD	C332-012AD	C332-012AD	C332-012AD	C332-012AD	
24*	ORING	H136-24	H136-24	H136-24	H136-24	H136-24	
25	BOTTOM CAP	C213-050D	C213-050D	C213-050D	C213-050D	C213-050D	



DURBIN HYDRAULIC VALVES

DURBIN INDUSTRIAL VALVE

DURBIN HYDRAULIC 6000# PARTS LIST



6000 Lb. HYDRAULIC VALVE							
VALVE NUMBER	D6820	D6821	D6830	D6831	D6621	D6631	
SIZE	1/2" 2-WAY N/O	1/2" 2-WAY N/C	3/4" 2-WAY N/O	3/4" 2-WAY N/C	1/2" 3-WAY N/C	3/4" 3-WAY N/C	
Cv RATING	Cv 2.65	Cv 2.65	Cv 2.7	Cv 2.7	Cv 2.8	Cv 2.8	
ITEM	DESCRIPTION	PART #	PART #	PART #	PART #	PART #	
1	LID	C293-023DG	C293-023DG	C293-023DG	C293-023DG	C293-023DG	
2*	DIAPHRAGM	C333-017D	C333-017D	C333-017D	C333-017D	C333-017D	
3	RING		C893-015D-SS	C893-015D-SS	C893-015D-SS	C893-015D-SS	
4	YOKE	D283-025D-SS	D283-025D-SS	D283-025D-SS	D283-025D-SS	D283-025D-SS	
5	LOCK WASHER	H175-21	H175-21	H175-21	H175-21	H175-21	
6	HEX BOLT	H096-55	H096-55	H096-55	H096-55	H096-55	
7	RETAINING RING	H090-19	H090-19	H090-19	H090-19	H090-19	
8	BUSHING	C343-000D	C343-000D	C343-000D	C343-000D	C343-000D	
9	STUD	D153-024D	D153-024D	D153-024D	D153-024D	D153-024D	
10	HEX NUT	H060-23	H060-23	H060-23	H060-23	H060-23	
11	CAP	D283-200D	D283-200D	D283-200D	D283-200D	D283-200D	
12	BODY	C093-030D	C093-030D	C093-045D	C093-045D	C093-046D	
13*	ORING	H135-51	H135-51	H135-51	H135-51	H135-51	
14	SEAT SLEEVE	D013-001D	D013-001D	D013-001D	D013-001D	D013-001D	
15	HEX BOLT	H096-10	H096-10	H096-10	H096-10	H096-10	
16	HEX NUT	H060-03	H060-03	H060-03	H060-03	H060-03	
17	PISTON	C783-043D-IC	C783-043D-IC	C783-043D-IC	C783-043D-IC	C783-043D-IC	
18	SPRING	D293-081DR	D293-081DR	D293-081DR	D293-081DR	D293-081DR	
19	STEM EXTENSION	C332-012DD	C332-012DD	C332-012DD	C332-012DD	C332-012DD	
20*	PACKER	C683-040D	C683-040D	C683-040D	C683-040D	C683-040D	
21	SPACER	D043-065D	D043-065D	D043-065D	D043-065D	D043-065D	
22	UPPER STEM	C332-012BD	C332-012BD	C332-012BD	C332-012BD	C332-012BD	
23	LOWER STEM	C332-012AD	C332-012AD	C332-012AD	C332-012AD	C332-012AD	
24*	ORING 218	H136-24	H136-24	H136-24	H136-24	H136-24	
25	BOTTOM CAP	C213-050D	C213-050D	C213-050D	C213-050D	C213-050D	



DURBIN HYDRAULIC VALVES

DURBIN INDUSTRIAL VALVE

DURBIN HYDRAULIC 4000# & 6000# VALVE SIZING CHART

NOMINAL VALVE SIZE	STYLE	DESCRIPTION		CV		
				PSI	BAR	PORT 1 TO PORT 2
1/2"	2W NC	4000#	MODEL	D4821		3.3
			PRESSURE RATING	4000	276	
		6000#	MODEL	D6821		2.65
			PRESSURE RATING	6000	414	
	2W NO	4000#	MODEL	D4820		3.3
			PRESSURE RATING	4000	276	
		6000#	MODEL	D6820		2.65
			PRESSURE RATING	6000	414	
	3W	4000#	MODEL	D4621		3.3
			PRESSURE RATING	4000	276	
		6000#	MODEL	D6621		2.8
			PRESSURE RATING	6000	414	
3/4"	2W NC	4000#	MODEL	D4831		3.55
			PRESSURE RATING	4000	276	
		6000#	MODEL	D6831		2.7
			PRESSURE RATING	6000	414	
	2W NO	4000#	MODEL	D4830		3.55
			PRESSURE RATING	4000	276	
		6000#	MODEL	D6830		2.7
			PRESSURE RATING	6000	414	
	3W	4000#	MODEL	D4631		3.6
			PRESSURE RATING	4000	276	
		6000#	MODEL	D6631		2.8
			PRESSURE RATING	6000	414	