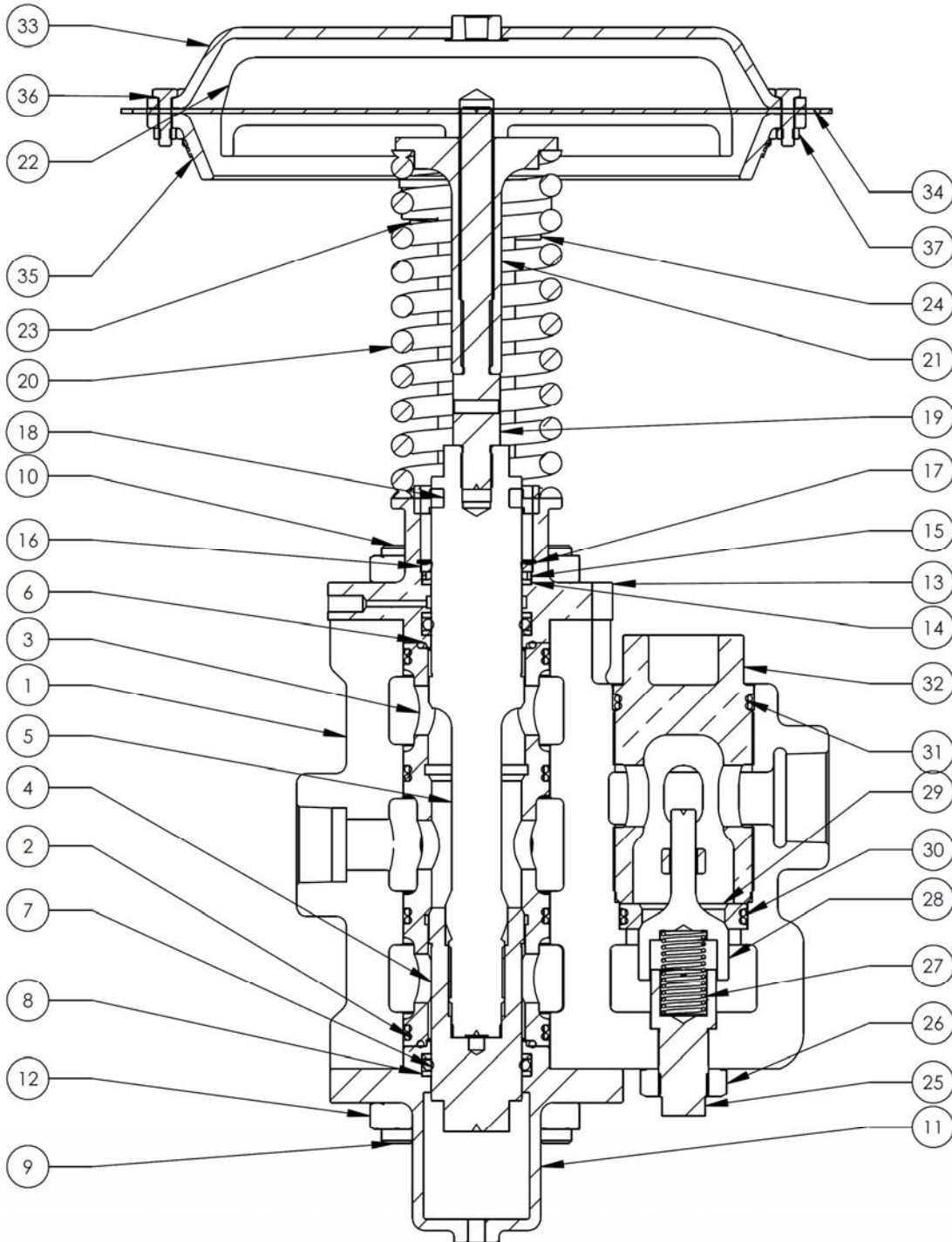




# 3-WAY TWO PRESSURE HYDRAULIC

DURBIN INDUSTRIAL VALVE

## DURBIN TWO PRESSURE PARTS DIAGRAM





# DURBIN HYDRAULIC VALVES

DURBIN INDUSTRIAL VALVE

## DURBIN TWO PRESSURE PARTS LIST

ITEM	VALVE NUMBER	D014-4002	D014-6002
	SIZE	1" 3W HYD 2 PRESSURE 4000 PSI	1-1/2" 3W HYD 2 PRESSURE 4000 PSI
	DESCRIPTION	PART #	PART #
1	BODY	C093-060D	C093-084D
2	ORING	H137-24	H137-55
3	SEAT SLEEVE	D013-008D	D013-009D
4	LOWER STEM	D113-020D	D113-031D
5	UPPER STEM	D143-035D	D143-047D
6	ORING	H136-43	H137-36
7	ORING	H136-17	H239-22
8	BACK UP WASHER	X	H143-31
9	STUD YOKE-BOTTOM CAP	D153-057D	D153-057D
10	YOKE STUD	X	D153-076D
11	BOTTOM CAP	C213-071D	C213-087D
12	HEX NUT	C573-016D	C2573-016D
13	YOKE	D283-082D	D283-103D
14	WIPER RING	X	H092-22
15	SPACER	X	D043-098D
16	SCRAPER RING	H092-14	H092-23
17	RETAINING RING	H090-49	H090-52
18	SPRING WASHER	D083-027D	X
19	STEM EXTENSION SCREW	D133-016D	D133-020D
20	DIAPHRAGM SPRING	D293-048D	D293-057D
21	SPRING RETAINING NUT	C633-026D	C633-030D
22	PISTON	C783-104D	C783-113D
23	LOCK WASHER	H175-21	H175-21
24	YOKE BOLT	H096-50	H096-50
25	CHECK GUIDE STUD	D203-002D	D203-005D
26	CHECK GUIDE STUD NUT	C573-025D	C573-029D
27	CHECK SPRING	D293-011Y	D293-023Y
28	CHECK SEAT	C833-013D	C833-015D
29	CHECK SEAT RING	C963-130D2	C963-098D
30	ORING	H136-51	H137-44
31	ORING	H137-14	H137-51
32	SEAT RETAINER	C863-013D	C873-011D
33	LID/COVER	D293-036D	C293-042D
34	DIAPHRAGM	C333-031D	C333-037D
35	RING	C893-031D	C893-037D
36	LID BOLT	H096-11	H096-11
37	LID NUT	H060-03	H060-03
	TOP ASSEMBLY	C392-009D	C392-010D
	REPAIR KIT	C182-046D	C182-047D

Please contact us for more information at Phone: 330.724.9968 Email: valve@durbinvalve.com Website: www.durbinvalve.com